

“Not much is known here of the flora of Korea, and only a few Korean plants are growing in the Arboretum, but these have proved so successful that it has seemed desirable to undertake a systematic exploration... and of introducing plants into this country from a region with climatic conditions as severe as those of New England.”

Charles Sargent



Mind your Latitude: 34° North



Malibu Coast AVA

Texas High Plains AVA

Coteaux de l'Atlas 1er Cru

Ghazir, Lebanon

Yamaguchi Prefecture

Middle Rio Grande AVA

Dahlongega Plateau AVA

Shanxi, China

Seoul - Average precipitation			
Month	Millimeters	Inches	Days
January	15	0.6	6
February	30	1.2	6
March	35	1.4	7
April	75	3	8
May	105	4.1	9
June	130	5.1	10
July	415	16.3	16
August	350	13.8	15
September	140	5.5	9
October	50	2	6
November	50	2	9
December	25	1	8
Year	1420	55.9	109

Température min :

-25°C à Séoul

-39°C à Cheorwon

Température max : record à 39,6°C (2018)

Ulleungdo : -9C record historique en général
seulement 3 jours en dessous de 0°C.

Jejudo : aussi peu de jours de gel sauf en
altitude

1 s avant JC – 7 ap JC : périodes des trois royaumes

676 – 892 : unification par les Silla

918 – 1232 : royaume Koryo

1232 : invasion Mongole

1392 : Période Choson et fin de domination Mongole

1592 : invasion japonaise

1627 : invasion des Jurchen (chinois de Manchourie)

18^{ème} siècle : prospérité

19^{ème} siècle : déclin (expansion Chine, Russie, Japon)

1905-1945 Péninsule de Corée est occupée par l'Empire du Japon

9 août 1945 entrée en guerre des Russes contre le Japon

8 septembre 1945 débarquement américain dans le sud

1943 : indépendance reconnue de la Corée à la conférence du Caire (Potsdam : URSS, USA, Chine, UK)

1948 Partition de la péninsule le long du 38^{ème} parallèle (DMZ zone militarisée : 1953)

- 15 août 1948 naissance de la Corée du Sud actuelle

Syngman Rhee est mis en place par les USA dans le sud

Revolte et répression sanglante : 200.000 personnes meurt sous la répression

(beaucoup de morts sur l'île de Jeju)

- 9 septembre 1948 naissance de la République démocratique populaire de Corée

1950-1953 : guerre de Corée - 2.000.000 de morts et 'statu quo ante bellum'

1961 Coup d'état par Park Chung Hee

1993 : 6 républiques avant d'arriver à la démocratie en 1993.



1653 Hendrik Hamel :
 naufrage du Sperwer

19 mai 1787 : expedition de
 La Pérouse redécouvre
 Quelpart (Jeju do)

25 mai 1787 : découvert de
 l'île de Dagelet (astronome de
 l'expédition)



346217
RELATION

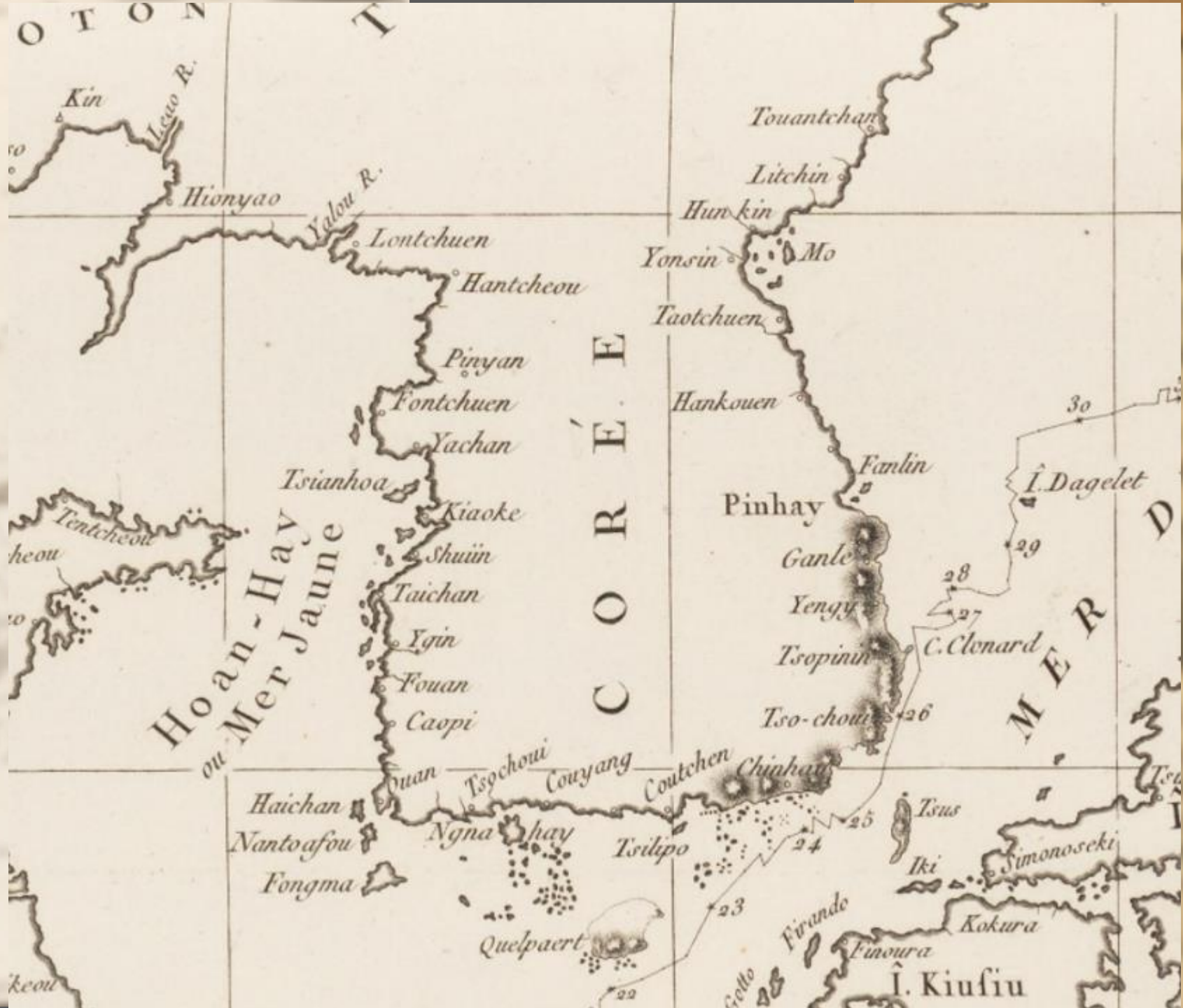
DU
NAUFRAGE
 D'UN VAISSEAU HOLANDOIS,
 Sur la Coste de l'Isle de Quel-
 paerts : Avec la Description
 du Royaume de Corée :
 TRADVITE DV FLAMAND,
 Par Monsieur MINUTOLI.



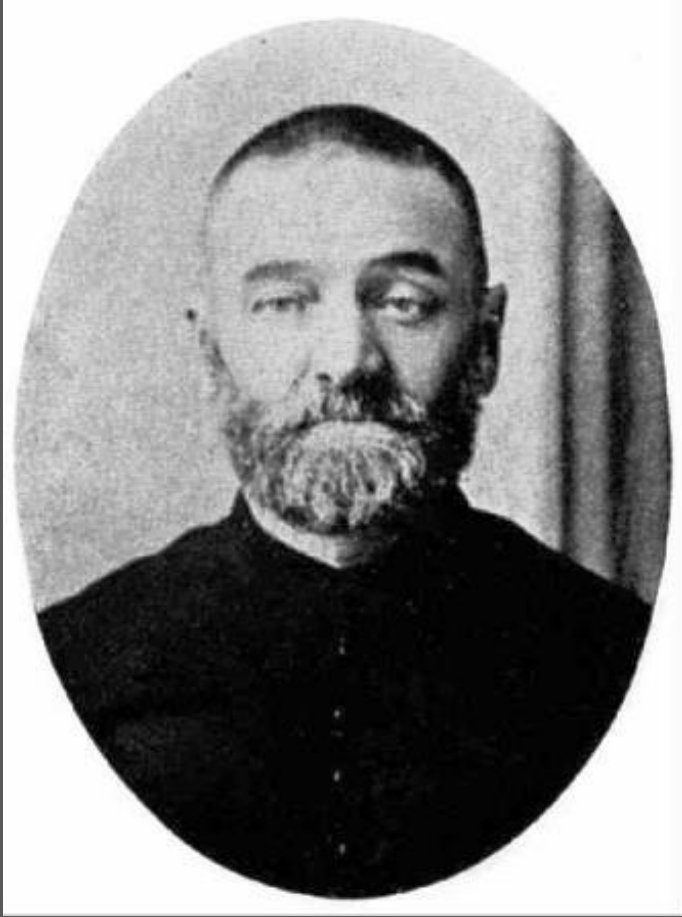
A PARIS,
 Chez THOMAS JOLLY, au Palais,
 dans la Salle des Merciers, au coin
 de la Gallerie des pti onniers, à la
 Palme & aux Armes d'Holande.



M. DC. LXX.
 AVEC PRIVILEGE DV ROY.



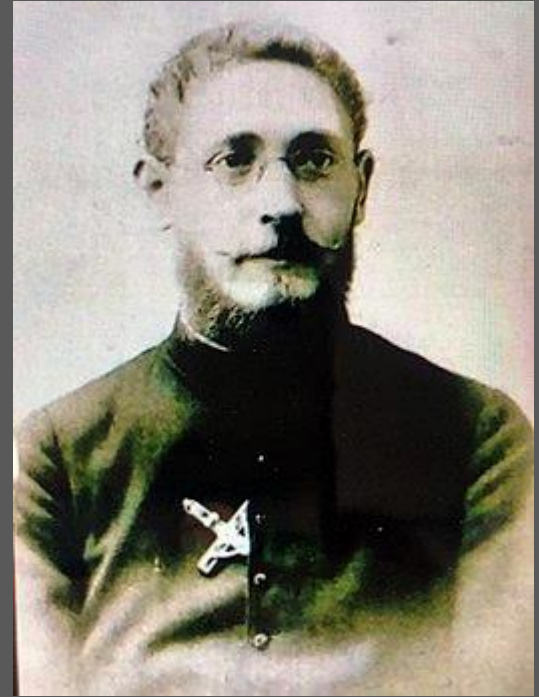
TION
PAGE
114



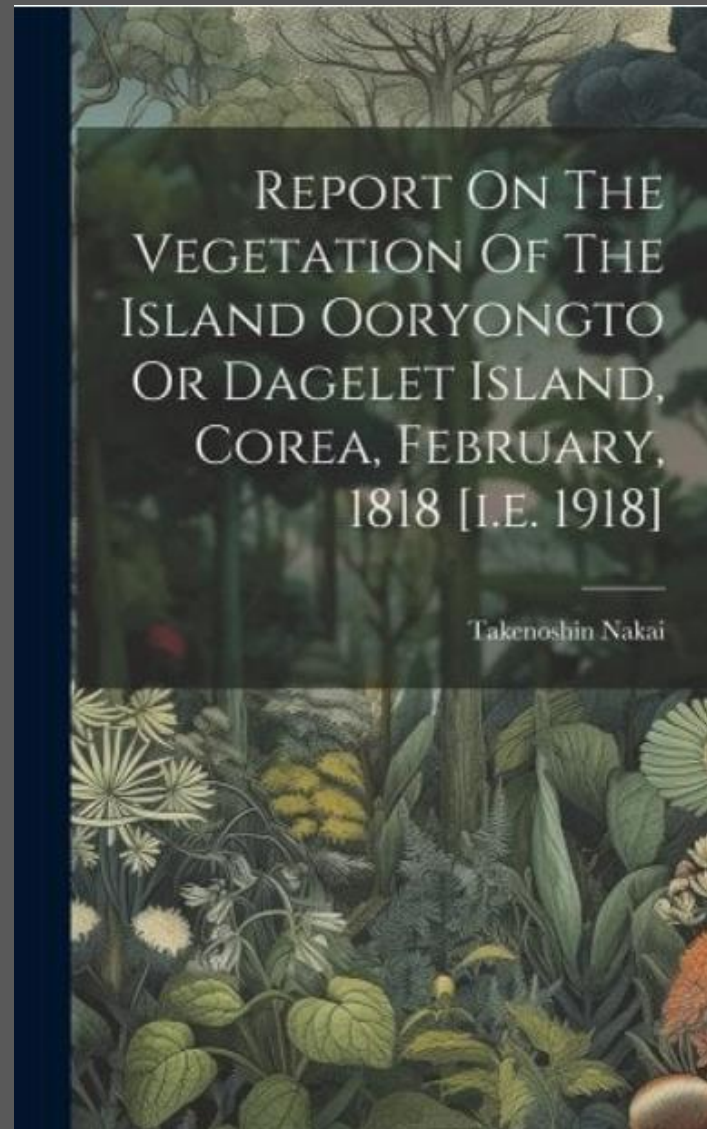
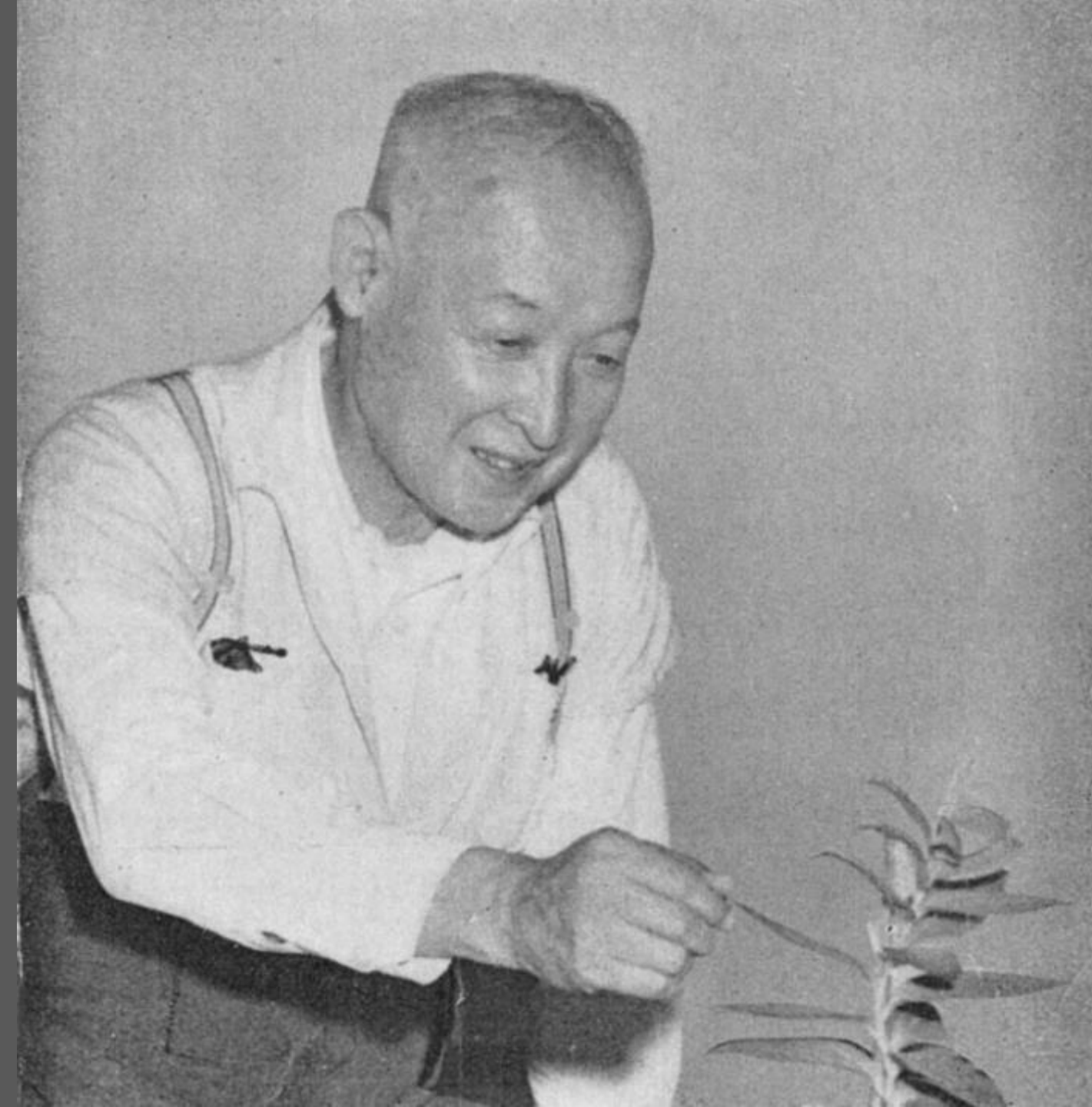
01 janvier 1847 – 04 juillet 1915
Urbain Jean Faurie



30 octobre 1873 – 27 janvier 1952
Emile Josphe Taquet 에밀_타케



中井 猛之進, *Takenoshin Nakai*,
27 Novembre 1882, Gifu Prefecture – 6 Decembre 1952





Taxonomic rank ▾

Accepted names only

Has images

6 369 results

Sort by ↑↓



SPECIES

Sasa suzukii Nakai

Author: *Nakai*

General: Bambuseae. *Nakai* 2002.

SPECIES

Sasa tenuifolia Nakai

Author: *Nakai*

General: Bambuseae. *Nakai* 1996.

SPECIES

Sasaella kogasensis (Nakai) Koidz.

Author: (*Nakai*) Koidz.

General: Bambuseae. *Nakai* 1996.

SPECIES

Sasa hayatae Makino

General: Bambuseae. *Nakai* 1996.

SPECIES

Sasa pubiculmis Makino



Ivan Vladimirovich Palibin 1872-1949
Conspectus florum koreae





Ulleungdo juin 1917



Ernest Henry Wilson 1876-1930





76-1930



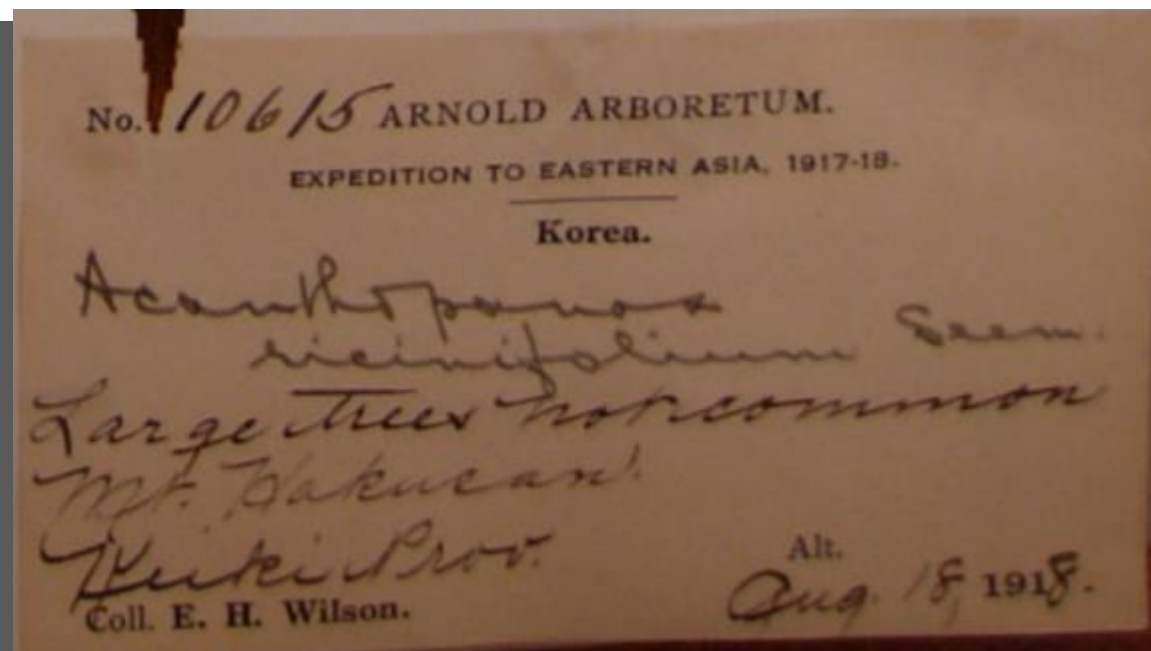
Ulle

A-169



Location

Term	Interpreted	Original
Continent	ASIA	
Coordinate uncertainty in metres	2000	2000
Country or area	Korea, Republic of	Korea, Republic of
Country code	KR	KR
County	Dobong	Dobong
Decimal latitude	37.684409	37.684409
Decimal longitude	127.008465	127.008465
Geodetic datum	WGS84	WGS84
Georeferenced by	Chin S. Chang	Chin S. Chang
Locality	Haku-san	Haku-san
State province	Seoul	Seoul



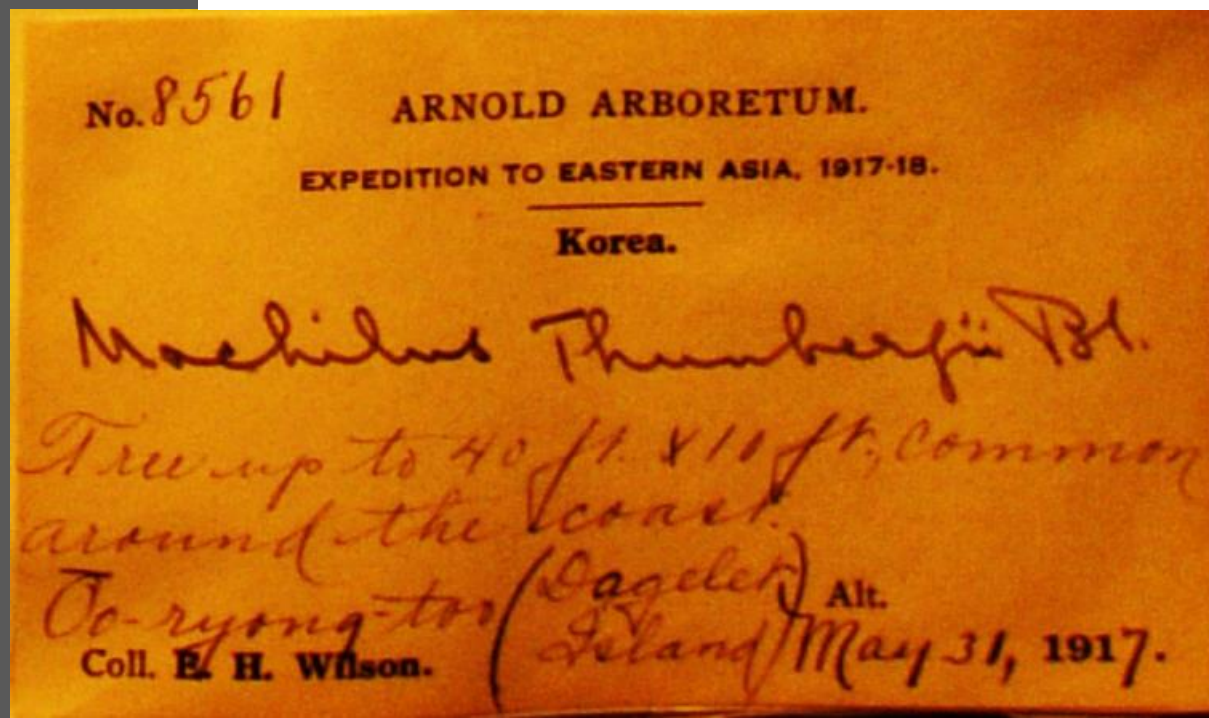
Machilus thunbergii Siebold & Zucc.

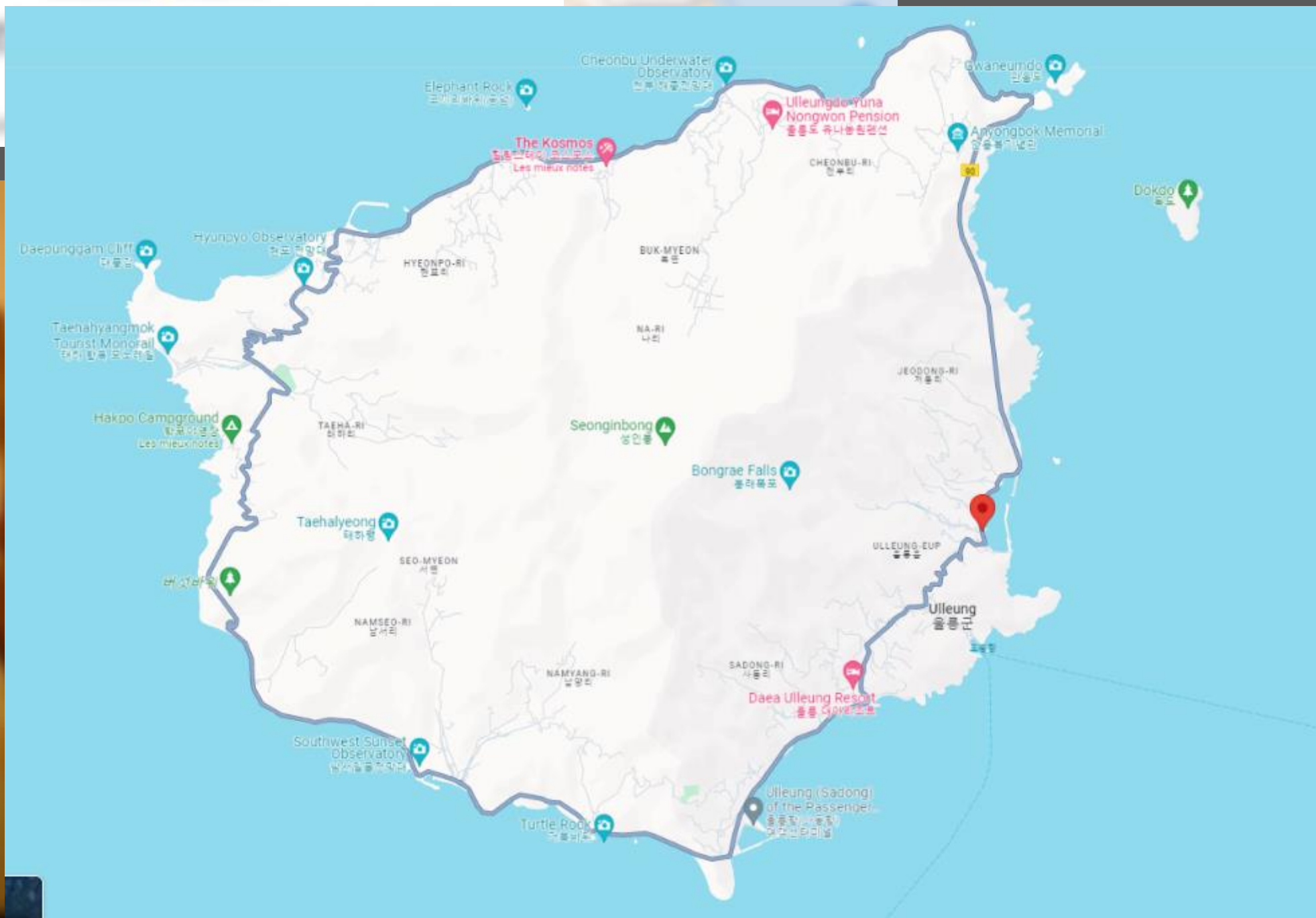
Collected in Korea, Republic of

Plantae > Tracheophyta > Magnoliopsida > Laurales > Lauraceae > *Machilus*

Location

Term	Interpreted	Original
Continent	ASIA	
Coordinate uncertainty in metres	2000	2000
Country or area	Korea, Republic of	Korea, Republic of
Country code	KR	KR
County	Ulleung	Ulleung
Decimal latitude	37.493961	37.493961
Decimal longitude	130.909956	130.909956
Geodetic datum	WGS84	WGS84
Georeferenced by	Chin S. Chang	Chin S. Chang
Locality	Oo-rong-do Degelet Island Udo 羊洞 -> 亭洞	Oo-rong-do Degelet Island Udo 羊洞 -> 亭洞
State province	Gyeongsangbuk-do	Gyeongsangbuk-do





Elephant Rock
코끼리바위(象鼻岩)

Cheonbu Underwater Observatory
천부해저관측대

Gwaneumdo
관음도

Ulleungdo-Yuna Nongwon Pension
울릉도 유나농원펜션

Anyongbok Memorial
안영복기념관

The Kosmos
천부천하의 코스모스
Les mieux notes

CHEONBU-RI
천부리

Daepungam Cliff
대풍암

Hyunpyo Observatory
현포관망대

HYEONPO-RI
현포리

BUK-MYEON
북면

Taehyangmok Tourist Monorail
태하양목관광전차

Hakpo Campground
학포야영장
Les mieux notes

TAHA-RI
태하리

Seonginbong
성인봉

Bongrae Falls
봉래폭포

JEODONG-RI
거동리

Taehalyeong
태하영

SEO-MYEON
서면

ULLUNG-EUP
울릉읍

Ulleung
울릉도

비경대

NAMSEO-RI
남서리

SADONG-RI
사동리

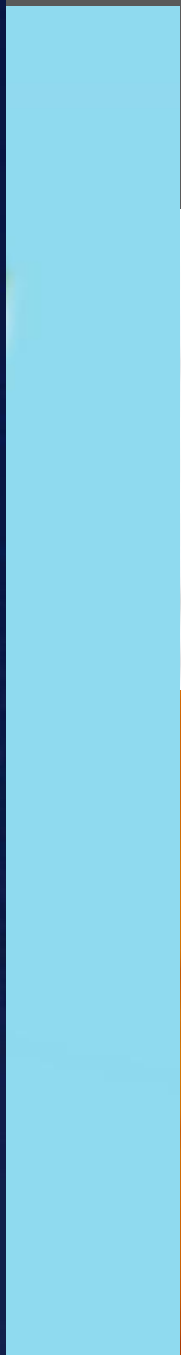
Daea Ulleung Resort
대애울릉리조트

Southwest Sunset Observatory
남서일몰관망대

Turtle Rock
거북바위

Ulleung (Sadong) of the Passenger
울릉도(사동)여객선터미널

Mach



OCCURRENCE | 24 MAY 1917

Platycarya strobilacea Siebold & Zucc.

Collected in Korea, Republic of

Plantae > Tracheophyta > Magnoliopsida > Fagales > Juglandaceae > *Platycarya*



No. 8485 ARNOLD ARBORETUM.

EXPEDITION TO EASTERN ASIA, 1917-18.

Korea.

Platycarya strobilacea
S. & Z.
Small tree 10 ft. cult. said
to come from South Korea
Byer. Farm, Suwon, All.
Coll. E. H. Wilson, Prof. Hiki May 24/1917.



ARNOLD ARBORETUM
EXPEDITION TO EASTERN ASIA, 1917-18
Korea
Platycarya strobilacea
S. & Z.
Small tree 10 ft. cult. said
to come from South Korea
Byer. Farm, Suwon, All.
Coll. E. H. Wilson, Prof. Hiki May 24/1917.

OCCURRENCE | 24 MAY 1917

Platycarya strobilacea Siebold & Zucc.

Collected in Korea, Republic of

Plantae > Tracheophyta > Magnoliopsida > Fagales > Juglandaceae > *Platycarya*

Location

Term	Interpreted	Original
Continent	ASIA	
Coordinate uncertainty in metres	200	200
Country or area	Korea, Republic of	Korea, Republic of
Country code	KR	KR
County	Hwaseong	Hwaseong
Decimal latitude	37.200186	37.200186
Decimal longitude	126.983436	126.983436
Geodetic datum	WGS84	WGS84
Georeferenced by	Chin S. Chang	Chin S. Chang
Locality	Kazan 華山 near Suigen 水原	Kazan 華山 near Suigen 水原
State province	Gyeonggi-do	Gyeonggi-do



ICC.

1854 : Baron Alexander von **Schilppenbach**

1889 : Urbain **Faurie**

1897 : Emile Joseph **Taquet**

1899 : Ivan Vladimirovich **Palibin**

1905 : John George Jack

1917-1919 : E.H. **Wilson**

1966 : Corbet, D. Lighty

1976,1977 : Jelena de Belder

1977 : Steven Spongberg, D. Weaver

1979,1981 : Paul Meyer

1982 : Barry Yinger

1984 : Barry Yinger, S. March, D. Apps

1985 : Barry Yinger, T. Dudley, JC Raulston

1991 : Dan Hinkley, Bleddyn et Sue Wynn Jones

1997 : Tony Avent, Dan Hinkley, Darrell Probst, Bleddyn et Sue Wynn Jones et Sang Ki Hun, Head of Plant Collections at Chollipo Arboretum in Chollipo, Korea

1998 : IDS, Anne Boscawen

2011 – Cédric Basset

2023 – IDS



1905 John George Jack



1979, 1981 Paul Meyer



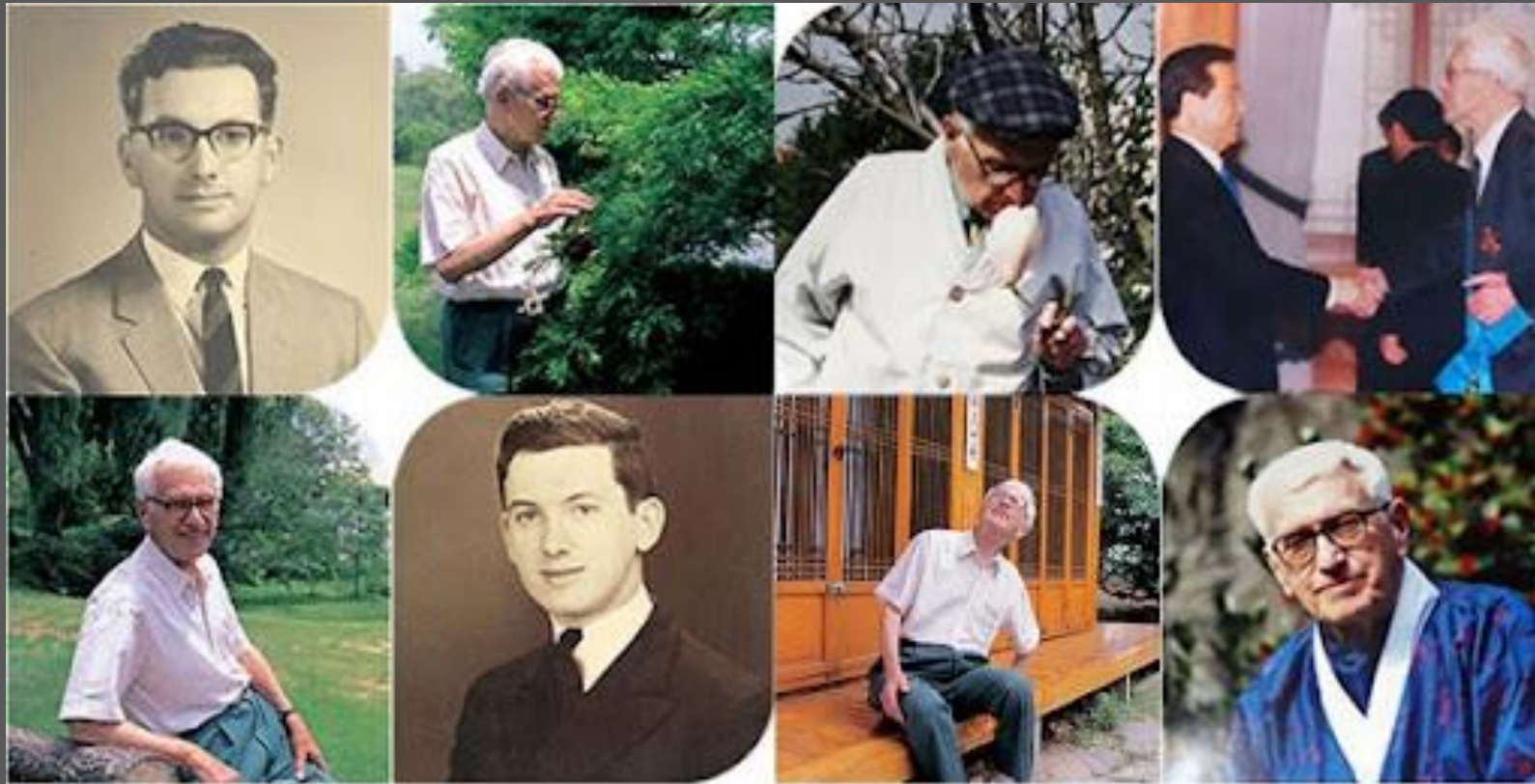
1985 : JC Raulston



1982, 1984, 1985 Barry Yinger



1997 : Sue et Bleddyn Wun Jones, Crug Farm in Wales



" 아름다운 삶의 향기를 남긴 푸른 눈의 한국인 민병갈 "

(Carl Ferris Miller)

(민병갈) Carl Ferris Miller / Min Byung-gal (1921-2002) Vécu en Corée à partir de 1951 et travailla pour la banque centrale de Corée à partir de 1953.

1970 : début de Cholippo arboretum

1979 : il est naturalisé coréen





1977 : Steve Sponberg



Carl Ferris Miller / Min Byung-gal : 민병갈
(1921-2002)

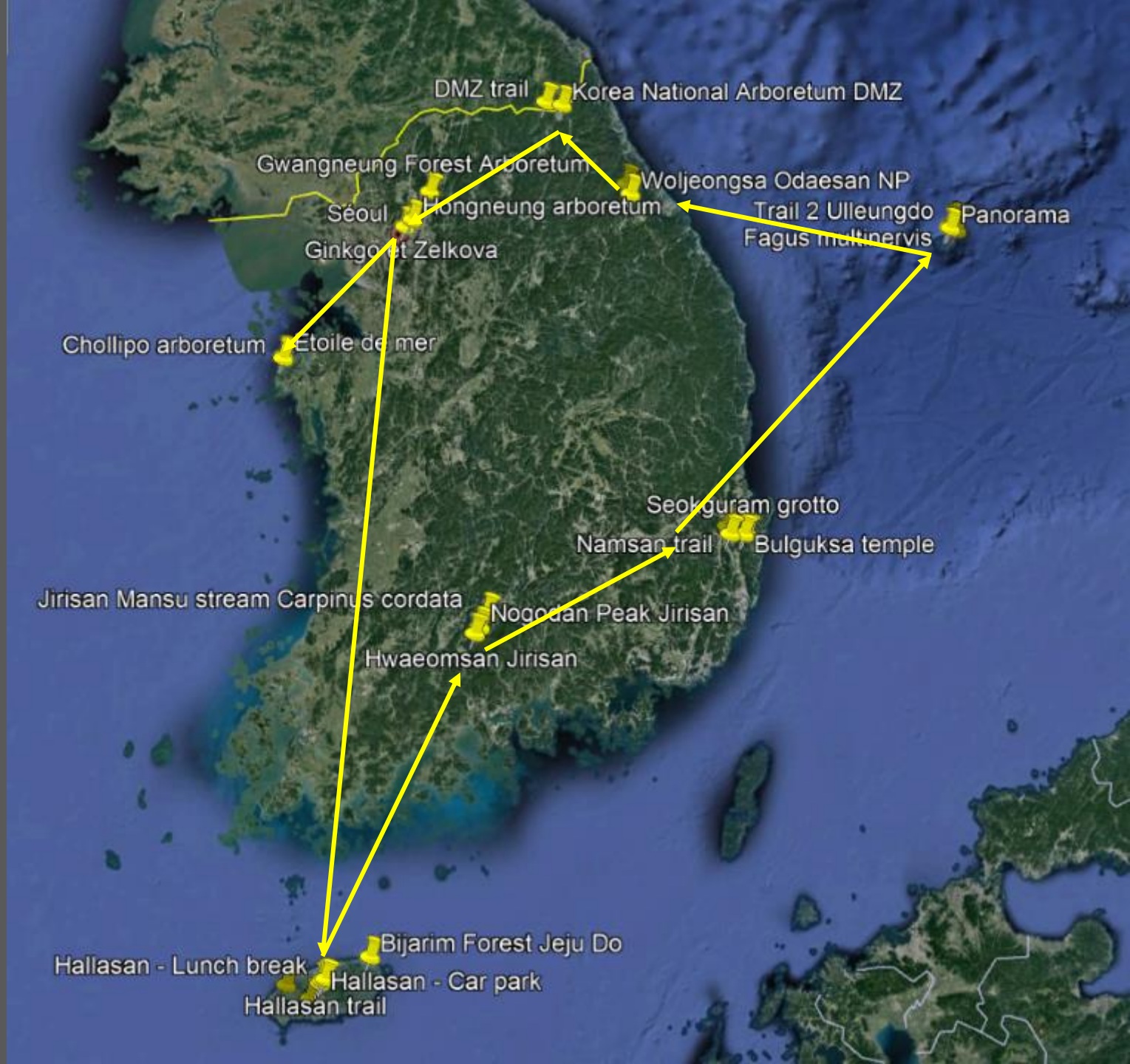


1991, 1993, 1997 : Dan Hinkley



1976, 1977 : Jelena de Belder (1925-2003)

18 avril au 2 mai 2023



Dol Hareuban:
Grand père de pierre





냉방
20°C

- 공기 청정
- 바람각 조절
- 파워 냉방
- 운전 정지
- 온도조절 (Up)
- 운전 선택
- 바람 세기
- 온도조절 (Down)
- 실내 온도
- 상하
- 좌우
- 기능 설정
- 예약
- 취침
- 켜짐
- 꺼짐
- 밝기 (Down)
- 설정 해제
- 밝기 (Up)

LG 냉난방
[OD-220]



Ile de Jeju 濟州 1849km² / 695519 habitants (Bxl : 161km²)
Sommet : Mont Halla 1950m

Torreya nucifera :
Bijarim Forest





Acer palmatum



Castanopsis
sieboldiana







Celtis sinensis



Machilus thunbergii



*Neolitsea
sericea*

*Virburnum
odoratissimum*



*Eleagnus
macrophyllus*

*Persea
japonica*





Maackia amurensis



Lindera erythrocarpa



Alangium platanifolium

Aralia elata





Orixia japonica



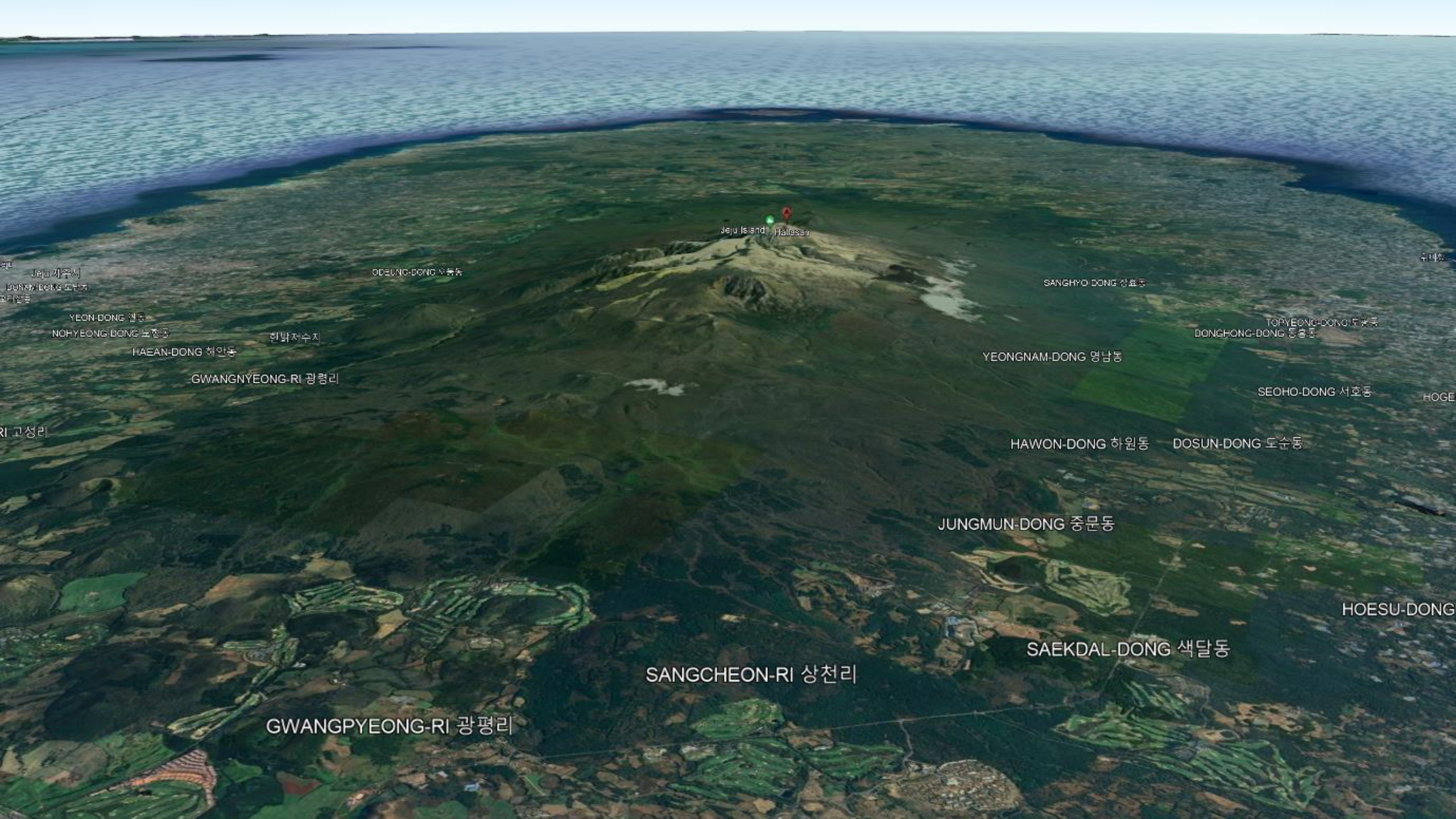
Staphylea bumalda

Orixa japonica



Staphylea bumalda





Jeju Island, Hallasan

ODEUNG-DONG 오동동

SANGHYO-DONG 상효동

Jeju City
BONNAM-DONG 보남동
모리밭동

YEON-DONG 연동
NOHYEONG-DONG 노형동

한탈저수지

HAEAN-DONG 해안동

TOPYEONG-DONG 토평동
DONGHONG-DONG 동홍동

YEONGNAM-DONG 영남동

GWANGNYEONG-RI 광령리

SEOHO-DONG 서호동

고성리

HAWON-DONG 하원동

DOSUN-DONG 도순동

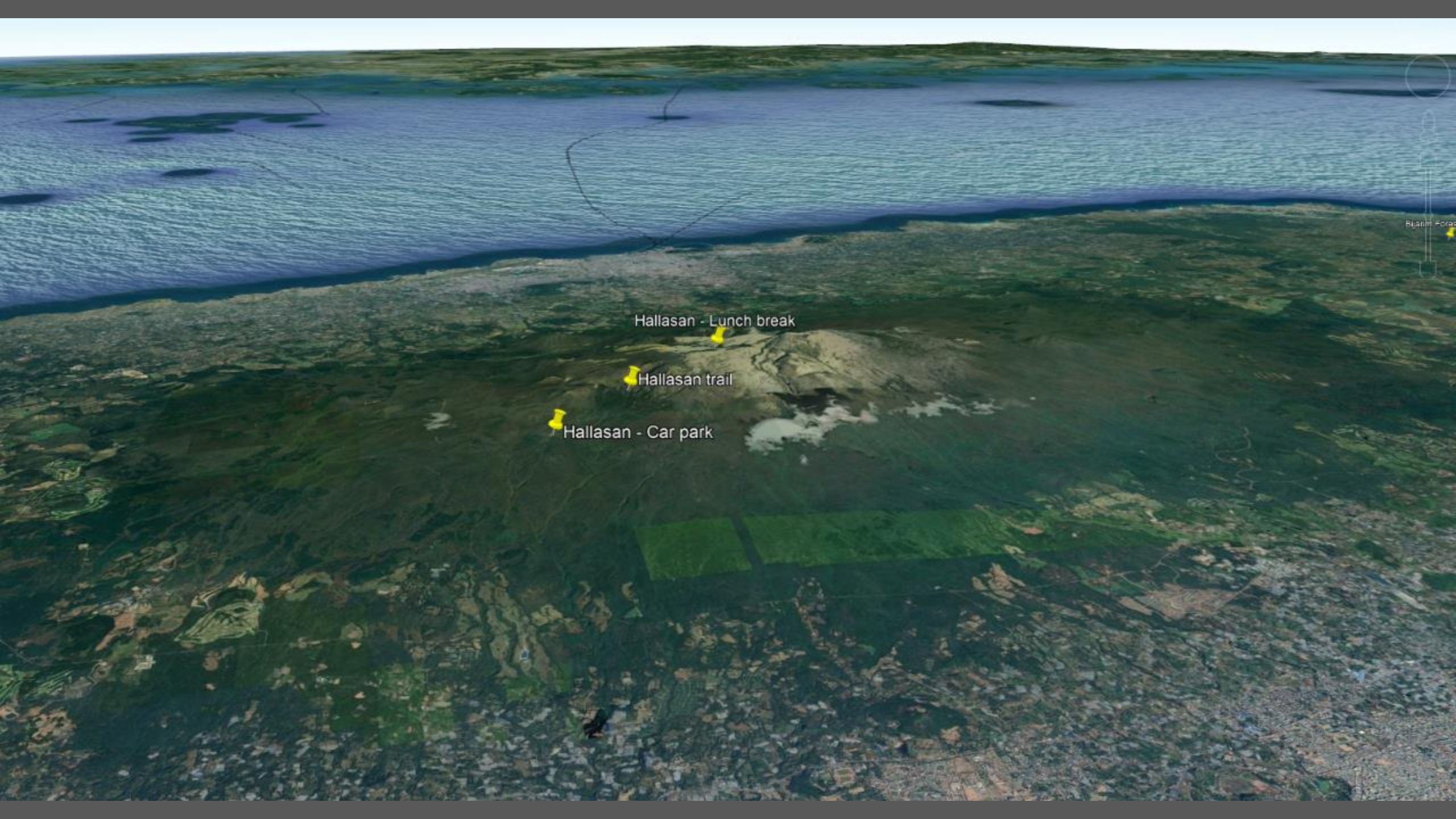
JUNGMUN-DONG 중문동

HOESU-DONG

SAEKDAL-DONG 색달동

SANGCHEON-RI 상천리

GWANGPYEONG-RI 광평리



Hallasan - Lunch break

Hallasan trail

Hallasan - Car park

Bianchi Forest

Yeongsil Trail

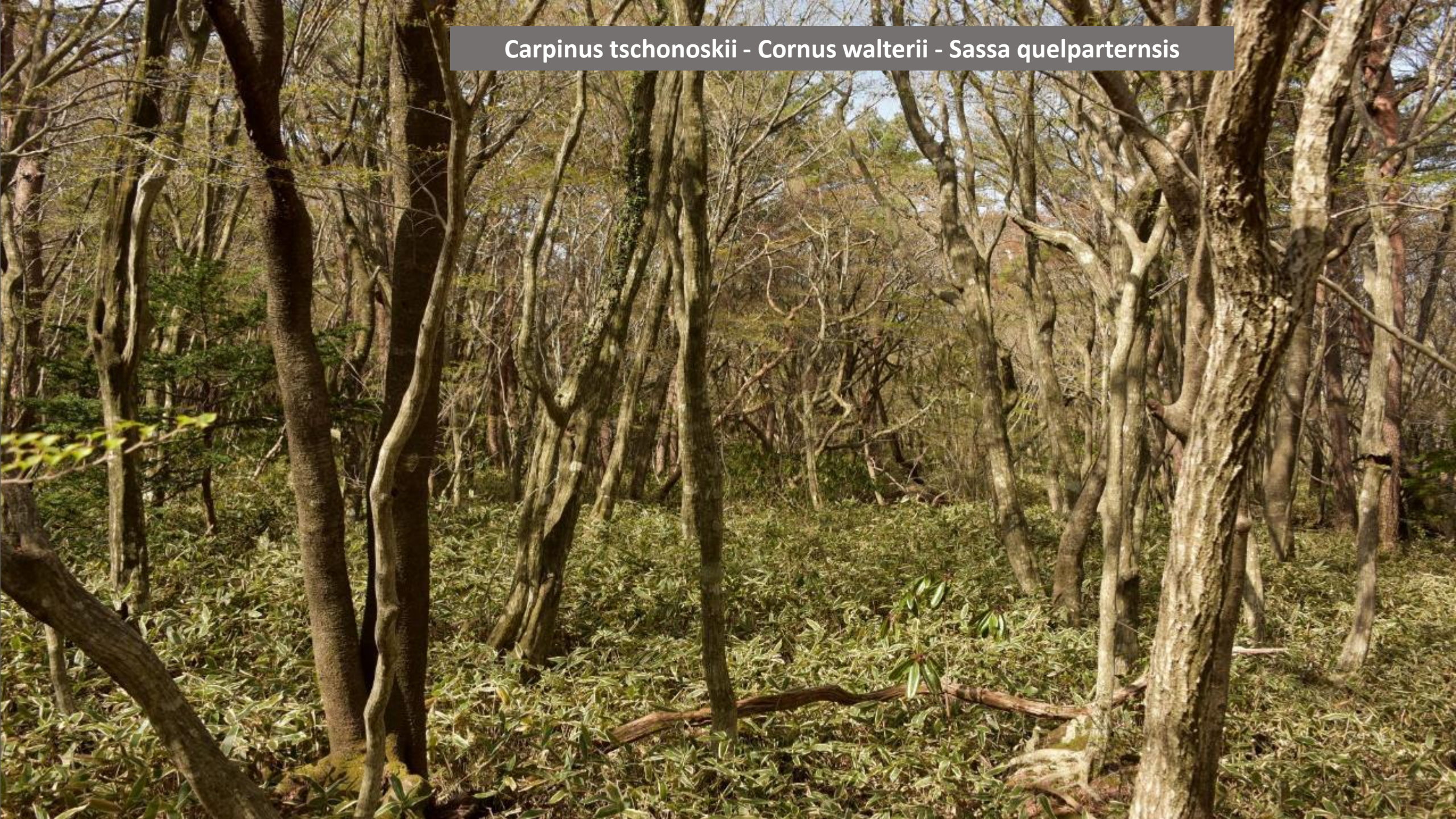


Pinus densiflora

Pinus densiflora



Carpinus tschonoskii - *Cornus walterii* - *Sassa quelparternsis*

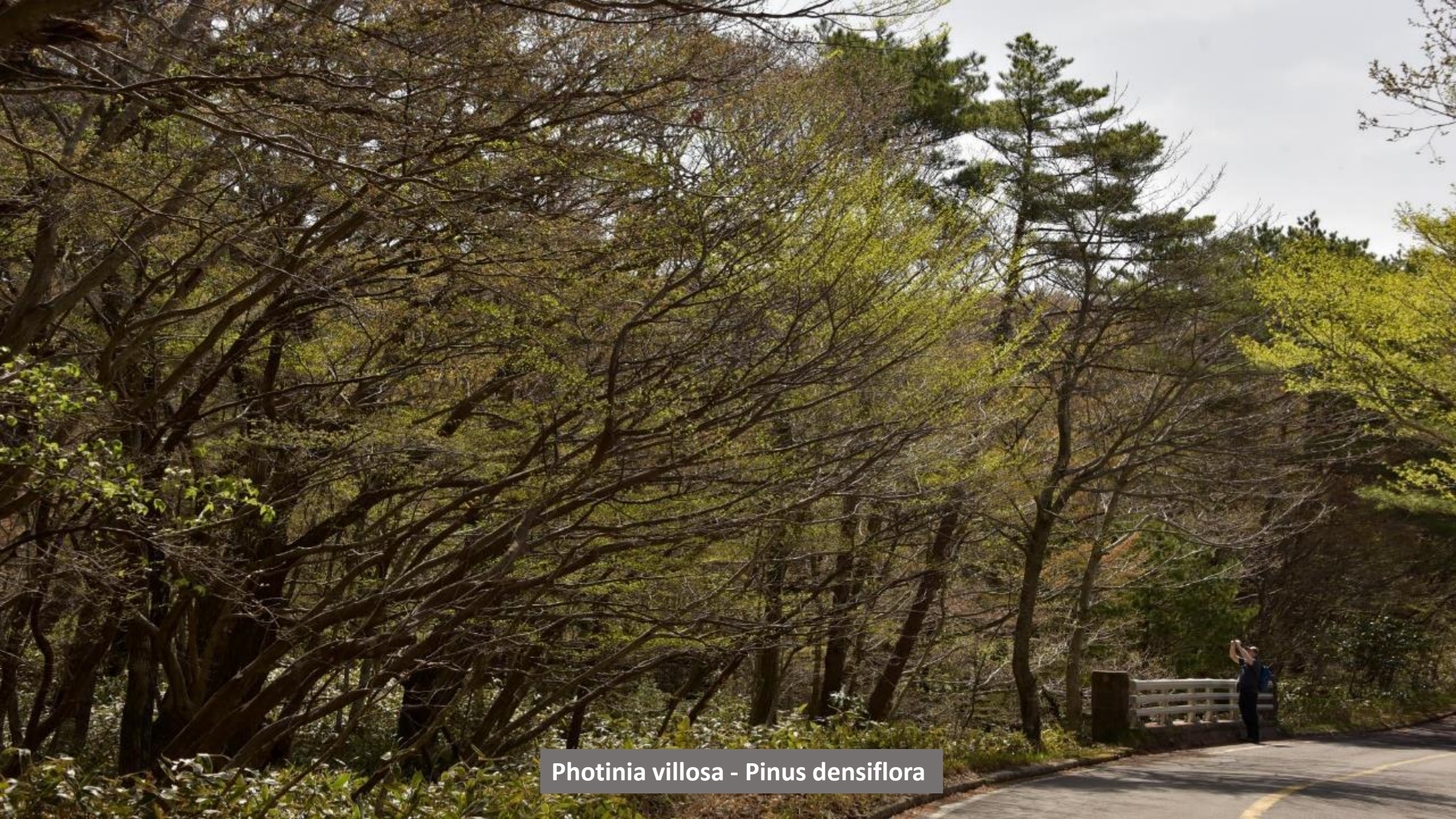




Carpinus tschonoskii Sassa quelparternsis



Taxus cuspidata - Daphniphyllum macropodum



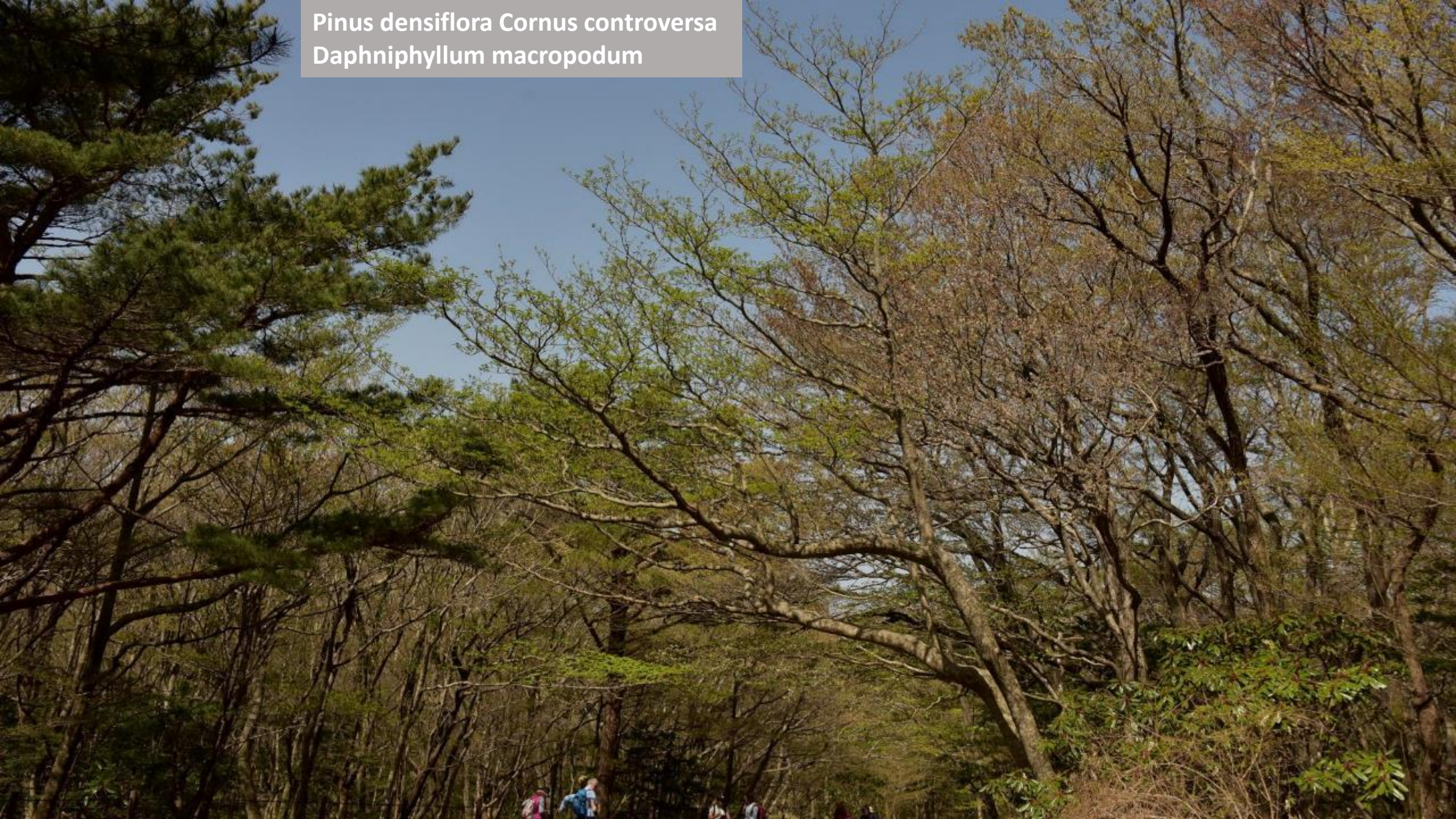
Photinia villosa - Pinus densiflora



Acer pseudosieboldianum



Pinus densiflora *Cornus controversa*
Daphniphyllum macropodum







Viburnum furcatum



Viburnum furcatum





Prunus serrulata





Taxus cuspidata



Taxus cuspidata



*Quercus
mongolica*



Carpinus laxiflora













Ilex crenata var *microphylla*









Rhododendron
mucronulatum var. taquetii





Sorbus commixta



Sorbus commixta















N 313



Betula ermanii



Magnolia sieboldii



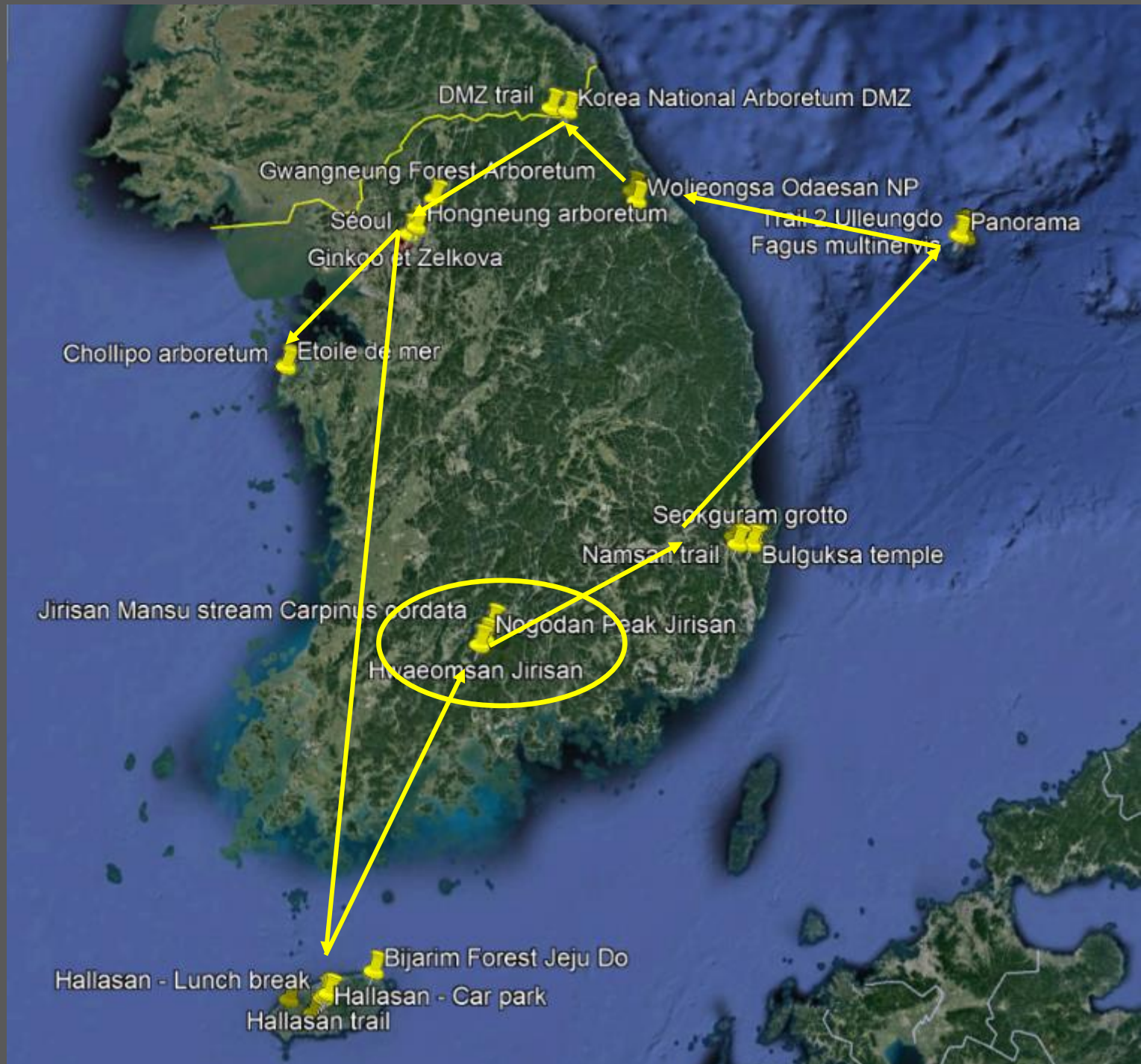


Juniperus chinensis* var *sargentii
Rhododendron mucronulatum











JIRISAN NATIONAL PARK
지리산국립공원
智異山國立公園

1967 Premier parc
national de Corée Sud



Ursus thibetanus



Jirisan Mansu stream *Carpinus cordata*

Nogodan Peak Jirisan

Hwaeomsan Jirisan



나눔은 기쁨을 함께하는 행복
오차일 언동 권수됩니다. 1년동 소원들
문의: 051-782-0011

그 사랑의 시작은 산불예방입니다
산불예방을 위한 캠페인입니다. 1년동 소원들
문의: 051-782-0011



HWAEOMSA BUDDHIST TEMPLE







假亦知真差別法

隨世所宜而化度









鐘樓閣

大正

三



式生弘護百深功









Prunus mume
Abricotier du japon















Meliosma myriantha



Styrax japonicus







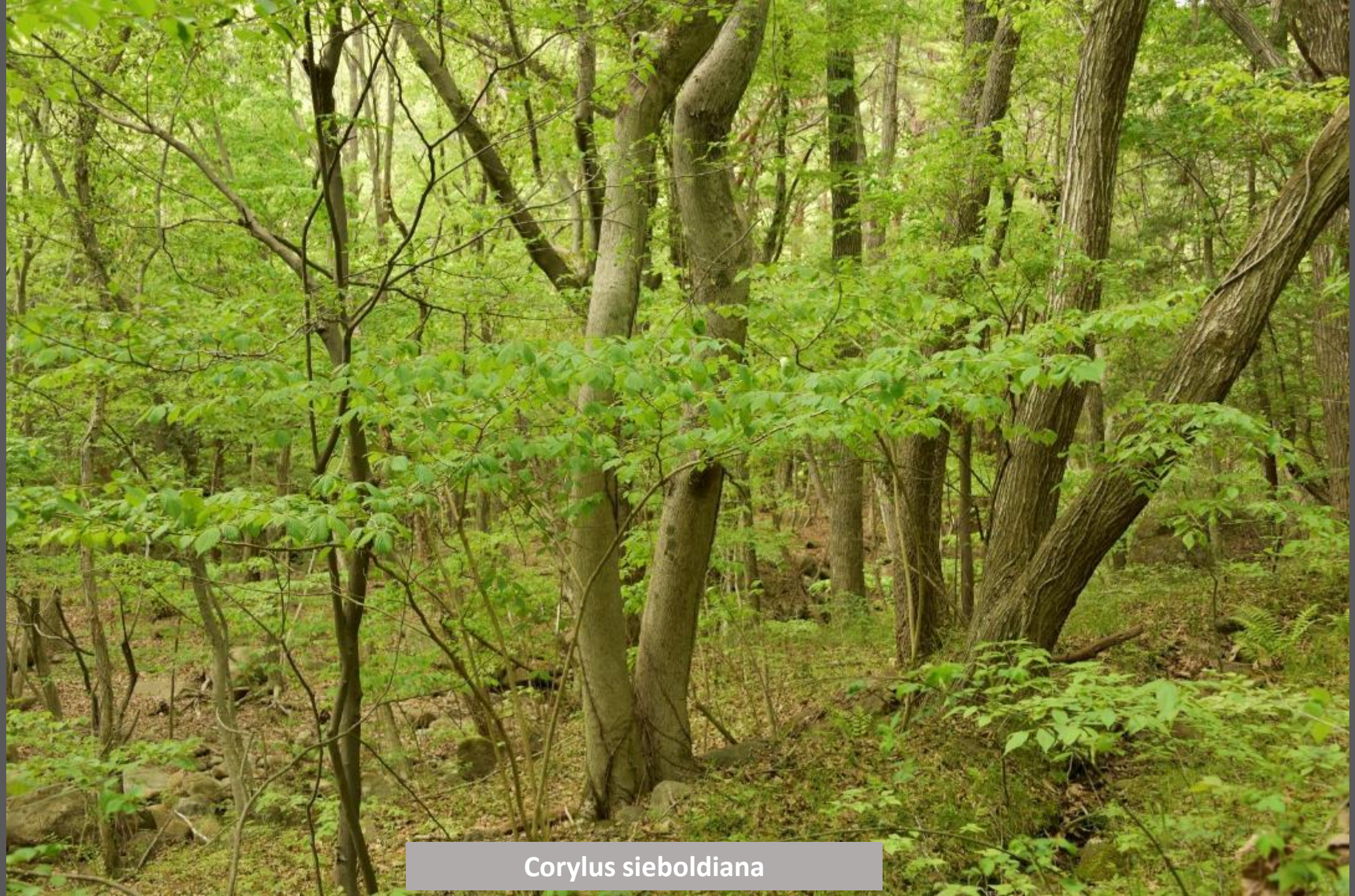




Quercus variabilis



Quercus variabilis



Corylus sieboldiana



Corylus sieboldiana



Weigela subsessilis



Weigela subsessilis









BIBIMBAP



Jirisan Mansu stream *Carpinus cordata*

Nogodan Peak Jirisan

Hwaeomsan Jirisan







Betula costata



Betula costata





**Stewartia
pseudocamellia**



Stewartia
pseudocamellia





**Stewartia
pseudocamellia**









Cornus kousa



Acer barbinerve



Acer barbinerve



Magnolia sieboldii



Magnolia sieboldii









Fraxinus chinensis
Subsp. rhynchophylla





Fraxinus chinensis
Subsp. rhynchophylla







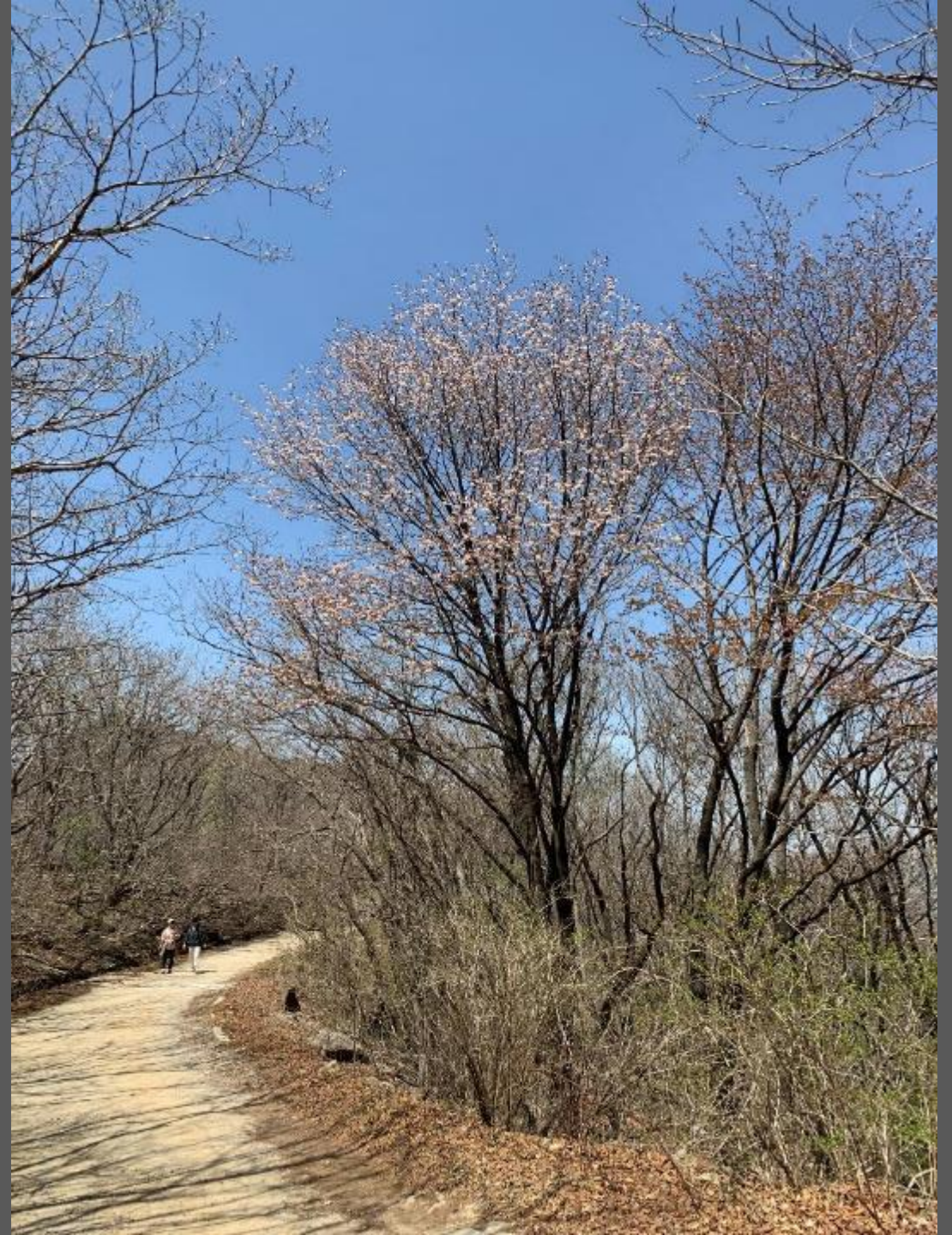
Quercus mongolica







Prunus serrulata











Larix gmelinii











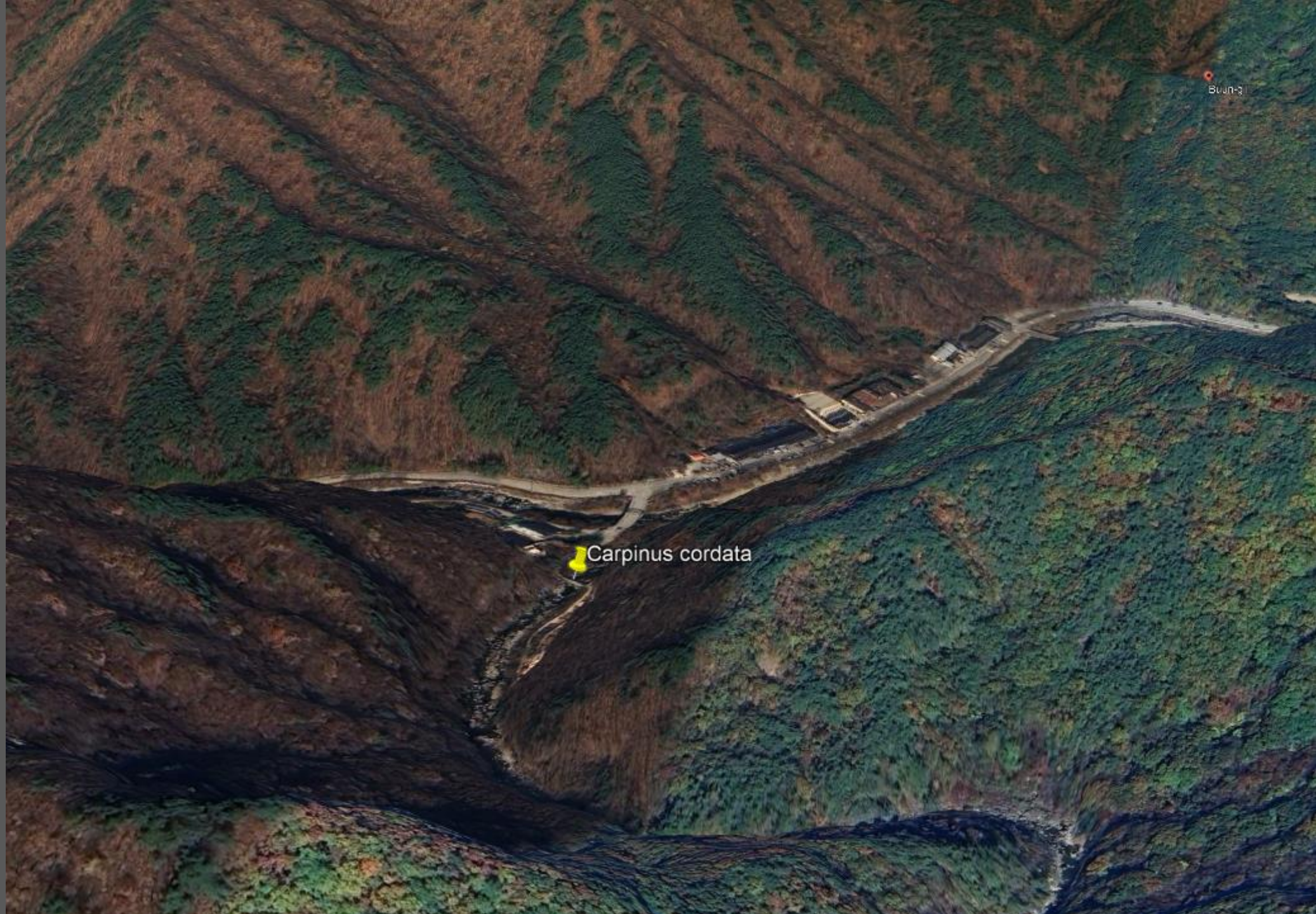




Jirisan Mansu stream *Carpinus cordata*

Nogodan Peak Jirisan

Hwaeomsan Jirisan



Carpinus cordata

Buah-3

의 생명이 살아 숨쉬는 곳 - 뱀사골

공사 구간: 뱀사골 탐방안내소 - 오룡대 와운교
신내 농어촌도로 206호선 정비 공사
안전에 불편을 드려 죄송합니다.
공사기간: 2023.3.24. ~ 4.30. 시정민 1번서건물과 시공사(주)로전 010-3651-7074

뱀사골









Platycarya strobilacea



Platycarya strobilacea





**Carpinus
cordata**















Sorbus alnifolia





Acer pseudosieboldianum



Acer pseudosieboldianum





Rhododendron yedoense var poukhanense



Rhododendron schlippenbachii



Rhododendron schlippenbachii



Maackia amurensis



Maackia amurensis



Deutzia koreana

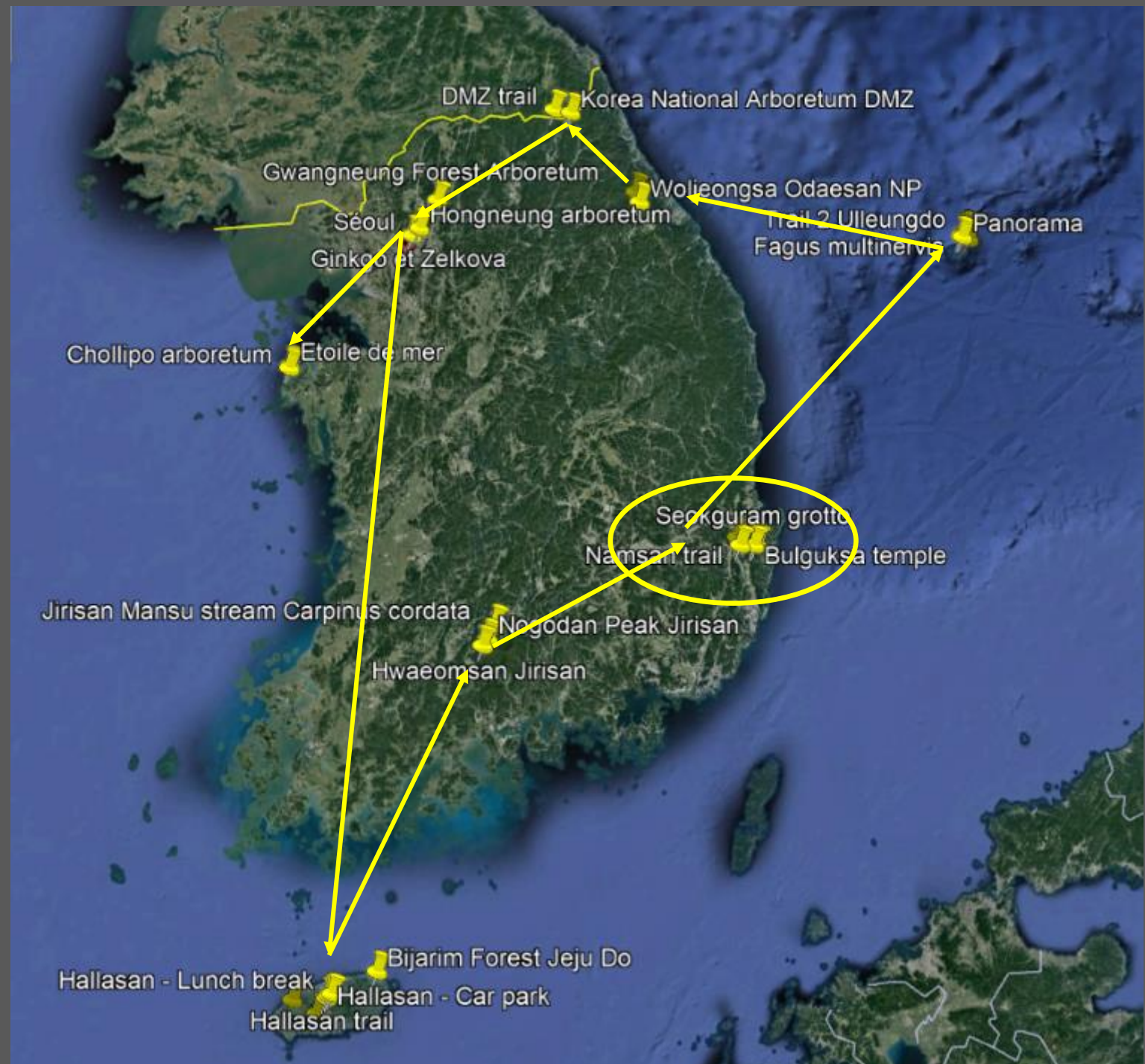


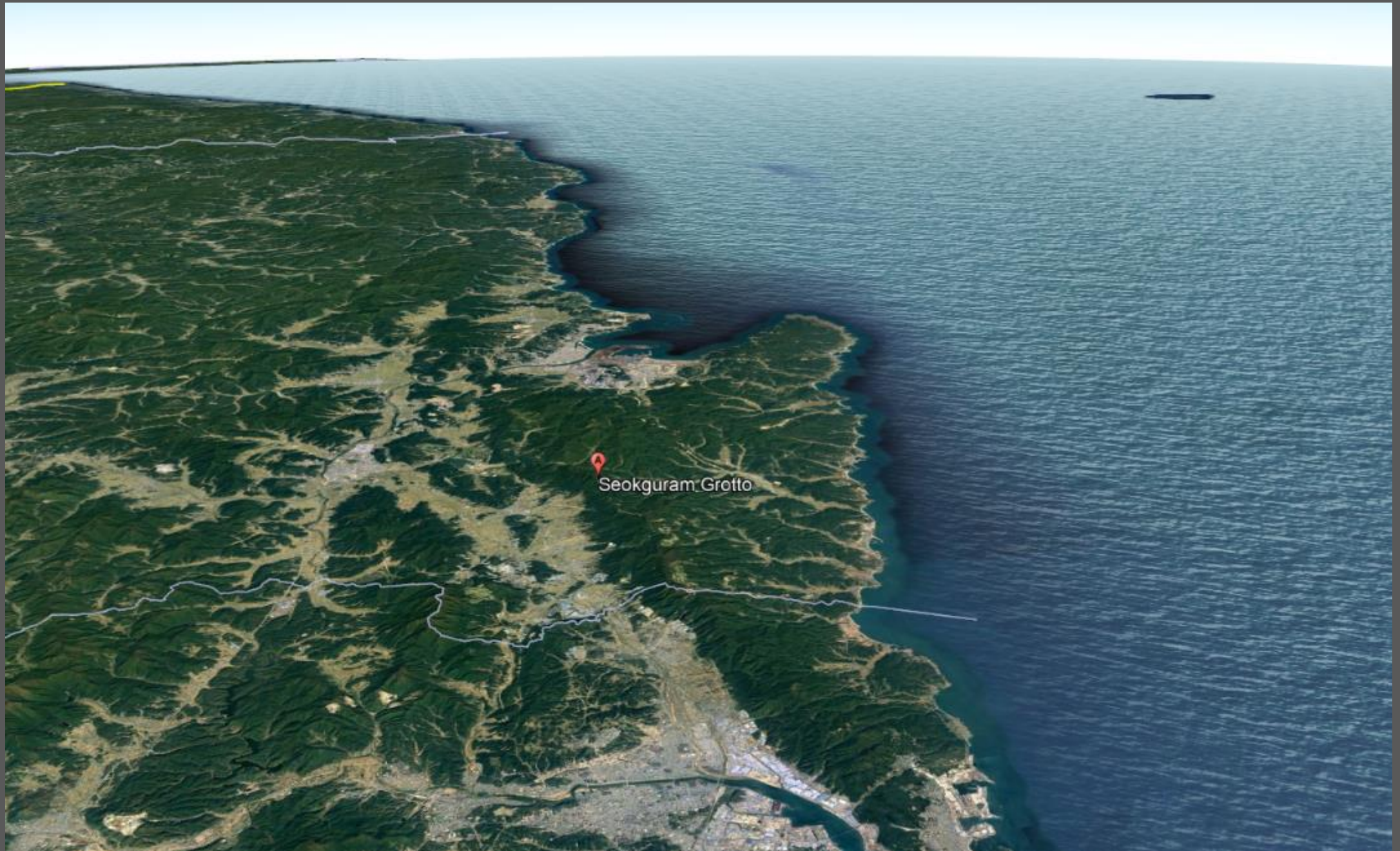
Deutzia koreana

Gyeongju National Park

경주국립공원,
慶州國立公園

1968 137km²







Chionanthus retusus



Chionanthus retusus

Bulguksa temple

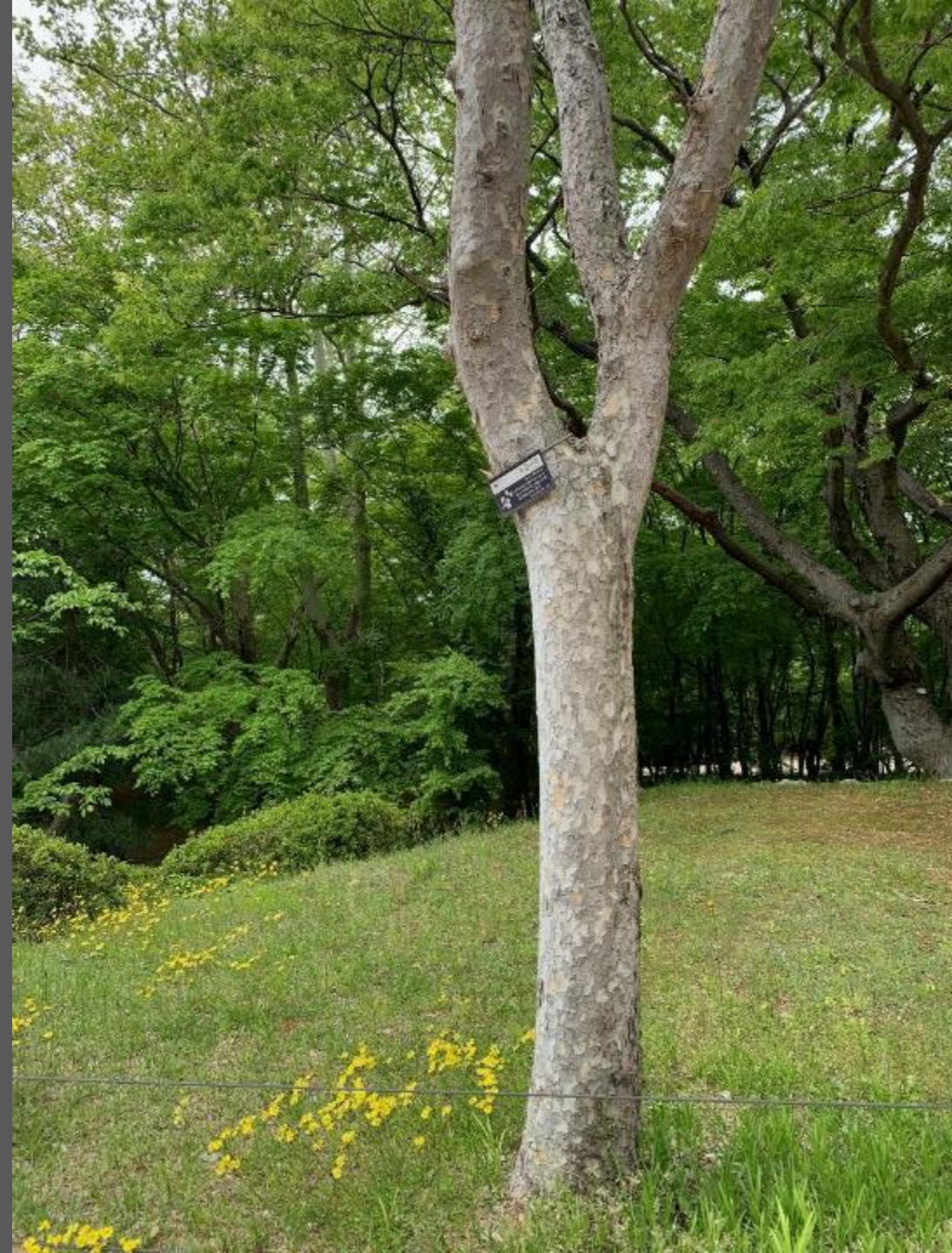








**Ulmus
parvifolia**







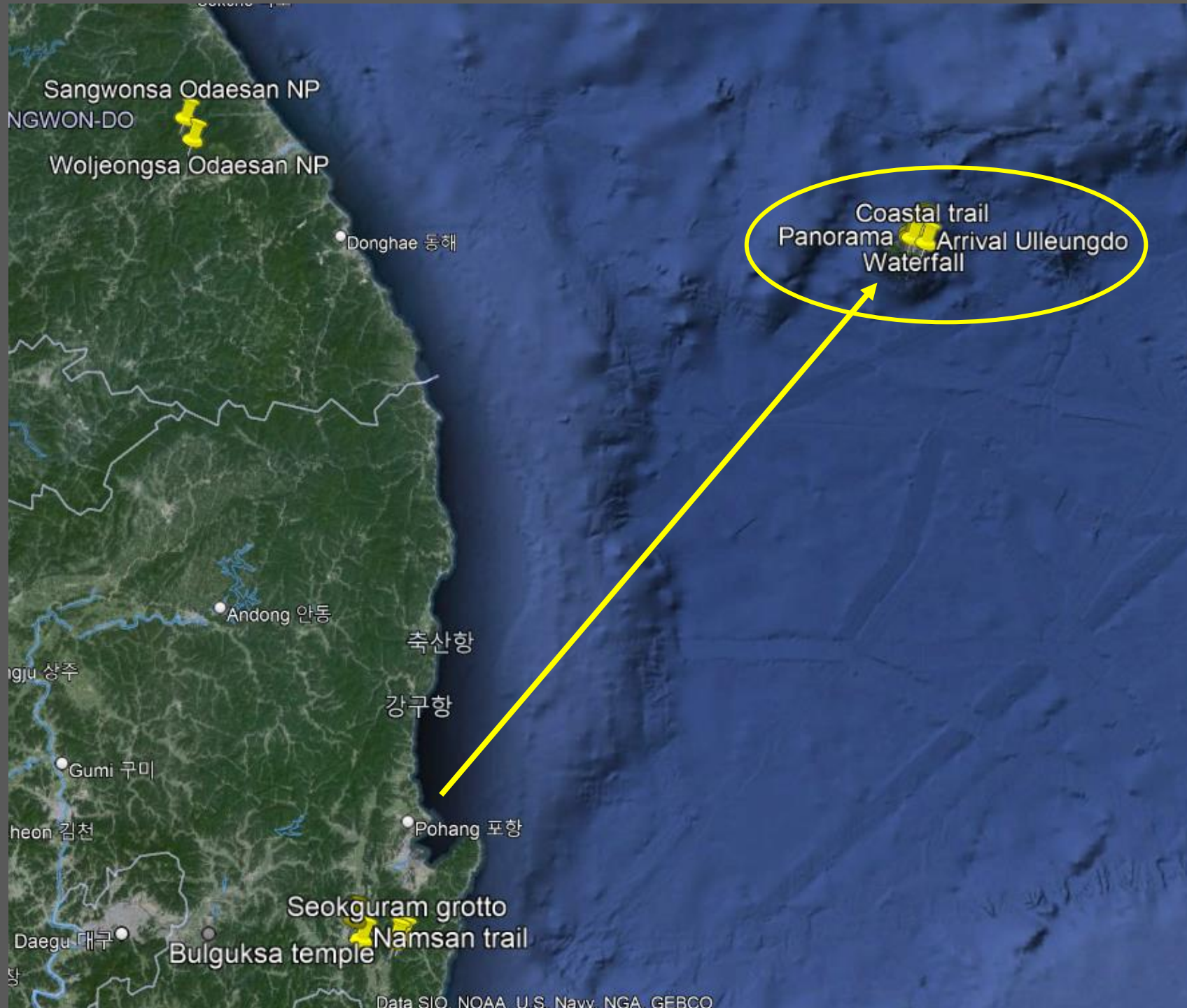
Cydonia sinensis











Sangwonsa Odaesan NP

NGWON-DO

Woljeongsa Odaesan NP

Donghae 동해

Coastal trail
Panorama
Arrival Ulleungdo
Waterfall

Andong 안동

축산항

상주 상주

강구항

Gumi 구미

김천 김천

Pohang 포항

Seokguram grotto

Daegu 대구

Bulguksa temple

Namsan trail

즐거운 여행, 활짝 웃는 일상을 위해 조금만 지켜주세요!

1. 마스크 착용  2. 거리두기  3. 손씻기 

KSA 한국예운조합 포항지부

EXPO 2030
KOREA

여객운임표

		포항 Pohang	←	울릉도 Ulleung		
여객선 명	선종	기항지		일반	도서민	
썬라이즈호	쾌속선	울릉도		69,500	7,000	

선박 사정으로 시간이 일부 조정될 수 있으니, 사전에 선사로 문의하시기 바랍니다
* (주)대저건설 ☎ 1899-8114

출항시간표

방면	여객선 명	출항시간	선사 명	상태
울릉도	썬라이즈호	09:00	(주)대저건설	정상

※ 해당 기항편의 선착장으로 인하여 지연, 변경 사항이 발생할 수 있습니다.

대저건설 DAEZER CONSTRUCTION

썬라이즈 SUNRISE

Information

No. 230423-3793-10469
0021-(서울)(주)여행돌

일반대인
할인(단가)

승선 · 개찰권 (여객용)

CROCK CHRISTOPHE EMILE

(남)

821012

연락처 : 010335*****

포항 ▶ 울릉도

2023-04-24 09:00

선박명 (Vessel)

썬라이즈호

등급/좌석 (Class/Seat)

일반석(1층)/가12

금액 (Fare)

[기획상품] 카드결제

티비널이용료 및 보령관리비용포함, 유류할증료: 6100원

(주)대저건설 T. 1899-8114

사업자번호 622-81-01389 대표 신성미

※출발시각 10분전까지 승선하시기 바랍니다.



가 12







선창회

T. 791.1145

독도새우
독도새우탕
모듬회
해물모듬
물회/회덮밥
회성식

독도새우
판매합니다.

독도새우
판매합니다.

키스





Lathraea
Fagus multinervis

Panorama

Trail 2 Ulleungdo

Waterfall

Trail 1 Ulleungdo
Trillium

Coastal trail

Arrival Ulleungdo

« Un rempart de roc vif et presque aussi à pic qu'une muraille la cerne dans tout son contour, à l'exception de sept petites anses de sable, sur lesquelles il est possible de débarquer. »











Juniperus chinensis



Persea thunbergii



Persea thunbergii









울릉숲길(저동~현포) 종합안내판

■ 숲길현황 개요

- 숲길의 기원: 천부 - 죽암 - 석포 - 내수전 전망대 - 저동으로 이어지는 숲길은 폭풍우로 출항이 불가능할 때 저동으로 통하는 옛길이었으며 정매화계곡이 그 사연을 간직하고 있음
- 구간: 저동 - 현포간 연장 25km
- 지형, 지질: 화산지형의 완만한 숲길, 애안절벽경관, 험준한 경사도의 경작지 및 촌락
- 고도: 해수면 - 해발 441m (내수전 전망대)

■ 숲길의 동식물



심초롱꽃



심단풍



שמ말나리



흑비둘기

■ 울릉 숲길구간 식물군락 분포



- 곰솔나무림
- 우산고로쇠나무림
- 너도밤나무림
- 동백나무림
- 심단풍나무림
- 참나무 조림지역
- 학솔, 송솔, 섬잣나무림



울릉숲길 조성사업은 녹색자금(복권기금) 지원으로 시행되었습니다.



Acer
okamotoanum









**Ulmus
laciniata**











Lathraea japonica



Lathraea japonica





Rubus takesimensis





Sorbus ulleungensis



	<i>S. POHUASHANENSIS</i>	<i>S. COMMIXTA</i>	<i>S. ULLEUNGENSIS</i>
Habits	Shrub to small tree	Shrub to small tree	Large tree
Leaf length (cm)	(11.0) 14.0–18.7 (25.0)	(10.2) 14.4–20.4 (30.3)	(16.7) 22.5–25.3 (31.3)
Inflorescence width (mm)	(63) 100–122 (160)	(50) 85–115 (154)	(90) 130–160 (235)
Flower diameter (mm)	(8) 9–11 (13)	(7) 8–10 (13)	(10) 12–14 (16)
Fruit length (mm)	(4.7) 6.0–7.1 (8.9)	(4.4) 6.2–7.1 (8.2)	(7.6) 9.0–10.5 (12.2)
Fruit width (mm)	(4.4) 6.5–7.9 (9.7)	(5.2) 6.4–7.2 (8.7)	(8.2) 9.2–10.6 (12.9)
Number of carpels	(2) 3–4 (5)	(2) 3–4 (5)	(3) 4–5 (6)

Sorbus ulleungensis





마경리

5-40

한반도
외부
반려동물

매거
호농
선재
모래
피나
안

해
매
즐

만남

만남

만남

민
박

만남
만남
만남



5-40

후박매입
후박 10,000
후박 20,000
후박 30,000
후박 40,000
후박 50,000
후박 60,000
후박 70,000
후박 80,000
후박 90,000
후박 100,000

후박, 콩배, 향나무
大 : 20,000
小 : 10,000

마가목 효능
산채 씨앗 팝니다
후박나무는...

묘목 팝니다

삼나무

명 이

부처꽃

부처꽃





















Fagus multinervis



Fagus multinervis



Acer pseudosieboldianum subsp. *takesimense*



Tilia amurensis (peut être ssp *taquetii*?) syn. *Tilia insularis*



Tilia amurensis (peut être ssp *taquetii*?) syn. *Tilia insularis*



Tilia amurensis
(peut être ssp *taquetii*?)
syn. *Tilia insularis*



Prunus takesimensis



Photo : Jan De Langhe











Alnus alnobetula subsp. *fruticosa*



Alnus alnobetula subsp. *fruticosa*



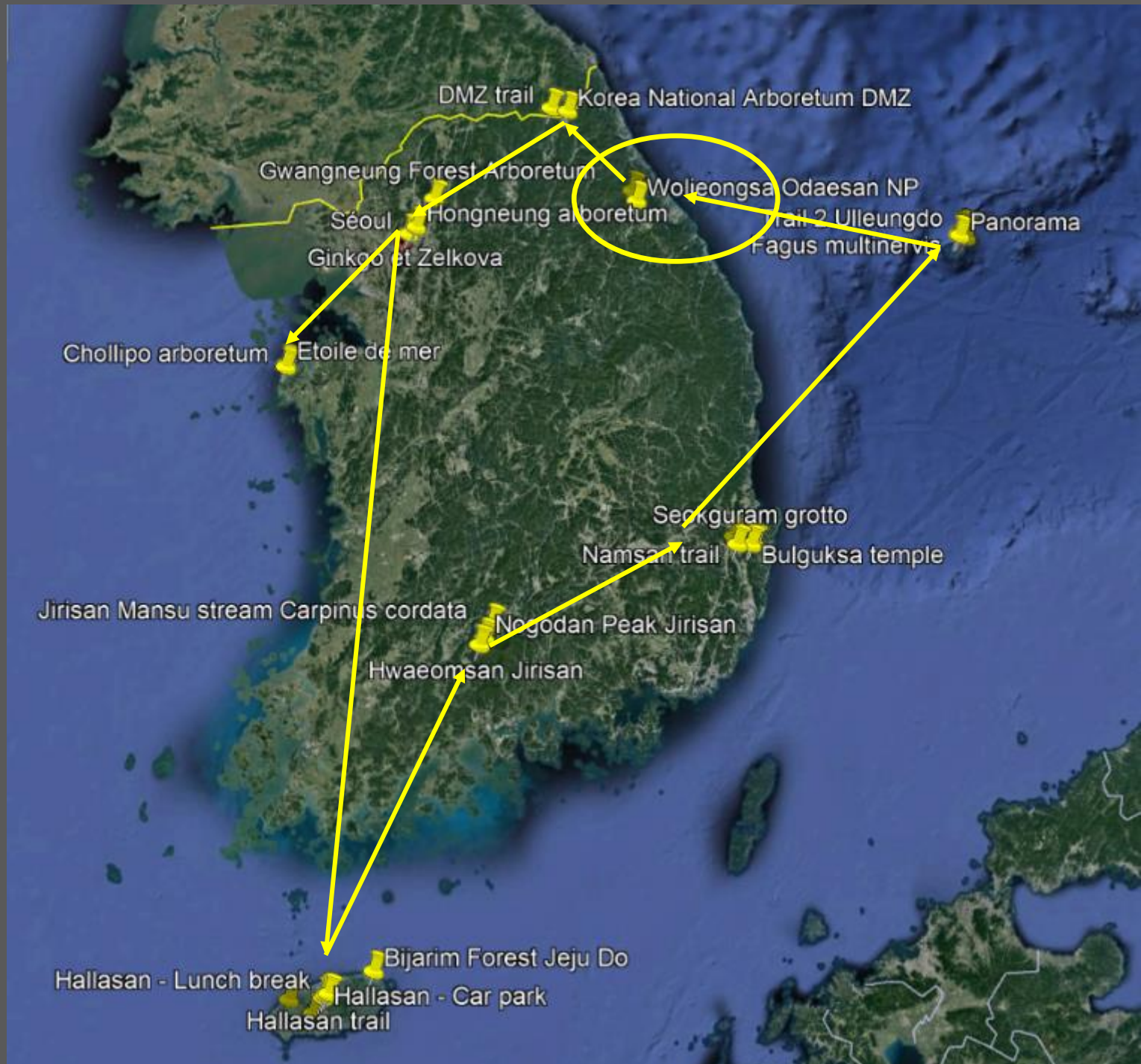


Galearis
camtschatica



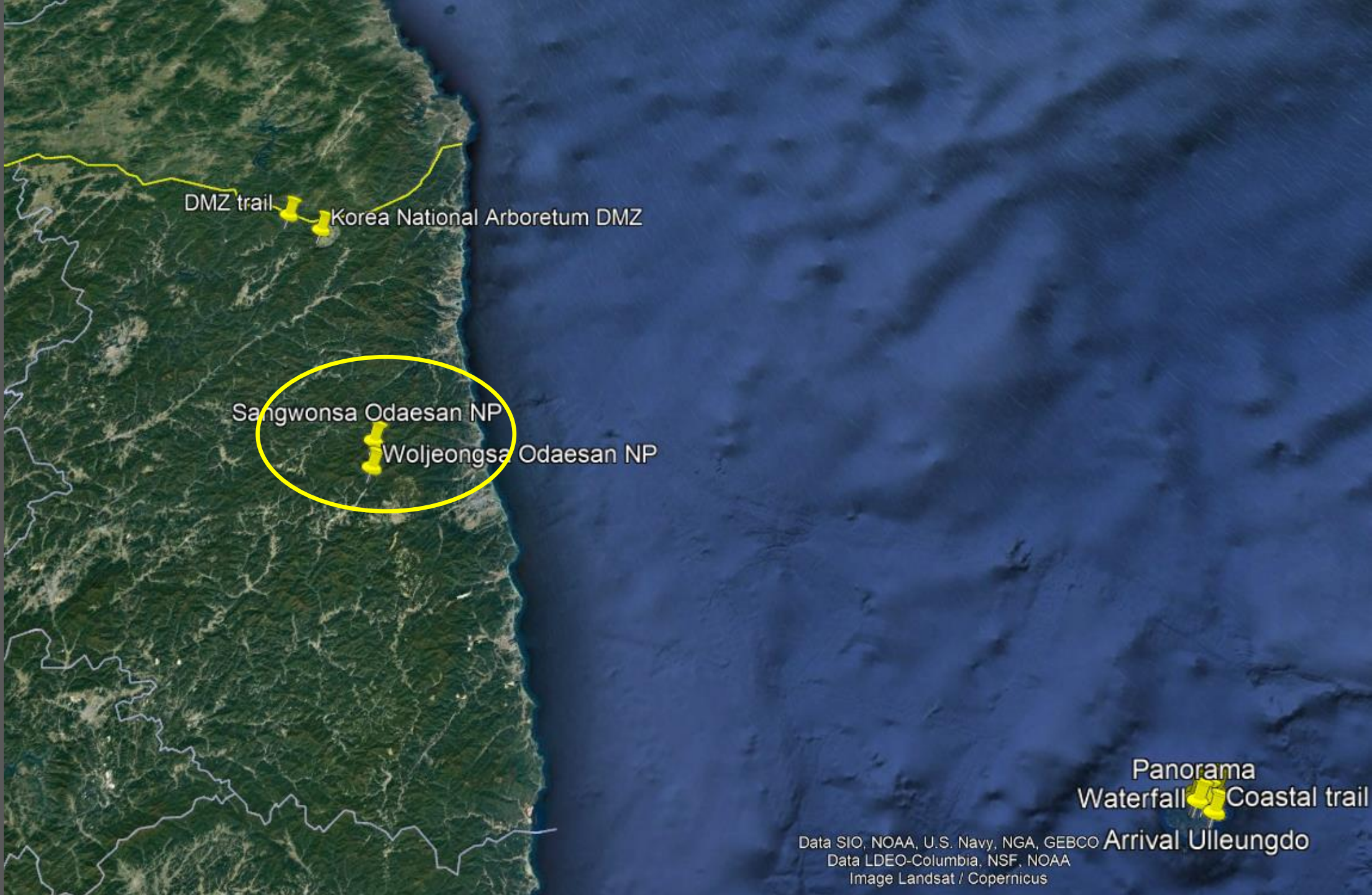
Odaesan National Park
오대산국립공원,
五臺山國立公園

1975 303km²









DMZ trail

Korea National Arboretum DMZ

Sangwonsa Odaesan NP

Woljeongsa Odaesan NP

Panorama
Waterfall

Coastal trail

Arrival Ulleungdo

Data SIO, NOAA, U.S. Navy, NGA, GEBCO
Data LDEO-Columbia, NSF, NOAA
Image Landsat / Copernicus







Abies holophylla







Acer pictum



Acer pictum





Acer triflorum

Acer triflorum





Hylomecon vernalis



Hylomecon vernalis



Ulmus davidiana

A close-up photograph of the branches of a tree, likely a Elm (Ulmus davidiana), showing young, bright green leaves and small, developing flower clusters. The branches are thin and brown, creating a complex network against a clear blue sky. The lighting is bright, highlighting the texture of the leaves and the structure of the branches.

Ulmus davidiana

Iris odaesanensis



Iris odaesanensis



Iris odaesanensis







Zelkova serrata



